

Camtech Electronics PDS Library Search Tool

Introduction

If you want to translate PADS® libraries to Microsoft® Excel to be able to search by part type, decal symbol, schematic symbol, pin count, and attributes then our PDS Library Search Tool (**P**art, **D**ecal, **S**ymbol) is just for you.

Our PDS Library Search Tool translates exported PADS® library files into a CSV (Comma Separated Value) file which can be read by Microsoft® Excel so that you can use the powerful Excel data filter to browse and search your library.

There is no direct access to PADS® libraries from our software as it translates an exported copy available from the PADS® library manager.

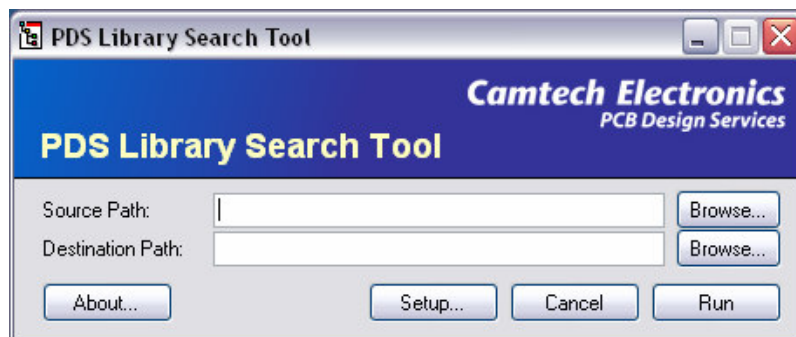
Product Guide

To create a PADS library file ready to translate follow this procedure.

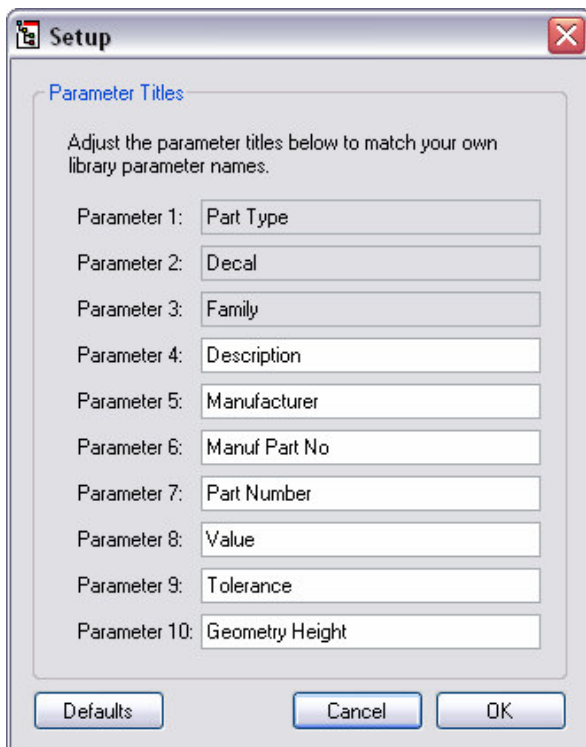
From PADS Layout select 'File' 'Library Manager'
From the Library Manager dialog box select the library to export.
Select 'Parts' and type * in the filter window and 'Apply'
Now select all the parts in your library so that they are highlighted,
then select 'Export'

You will be prompted to save the exported library file as a part type .p file. Save this to an area where you wish to access the data from the PDS Library Tool.

To run PDS Library Search Tool; from the Windows® start button, select All Programs and PDS Library Search Tool and the following window will appear:



Before using the tool you will need to setup any user defined attributes by selecting Setup... and editing the following pop-up dialog box:



This allows attributes names to be customised to match your libraries

Make sure that the typing and spaces match your part attributes and then select OK.

Now select the source path for the library file (.p extension) and the destination path where you wish the translated .csv file to be saved. When ready select Run.

You will then be prompted if you wish to open the translated file which will open in Microsoft® Excel. Select 'Yes' to open.

From Microsoft® Excel open file, select Data, Filter, AutoFilter and apply to each column

Your library is then neatly arranged in columns so that searches by part types, decals, symbols user attributes and pin count are all displayed. As an example you can interrogate which part types are tied to specific decals by searching the library by decal type.

Installation Guide

1. Save the PDS Library Search Tool ZIP file to your computer's hard drive.
2. Select the ZIP file and extract it (right mouse click on the file and select Extract All).
3. Double-click 'setup.exe' from the extracted files.
4. You will be prompted to agree to the End User Licence Agreement. If you agree to the terms of the license, tick the checkbox 'I have read and understand this agreement' and select 'I Agree'.
5. The application will run after installation. To run the application in future select 'Start', 'All Programs' and select 'PDS Library Search Tool'.